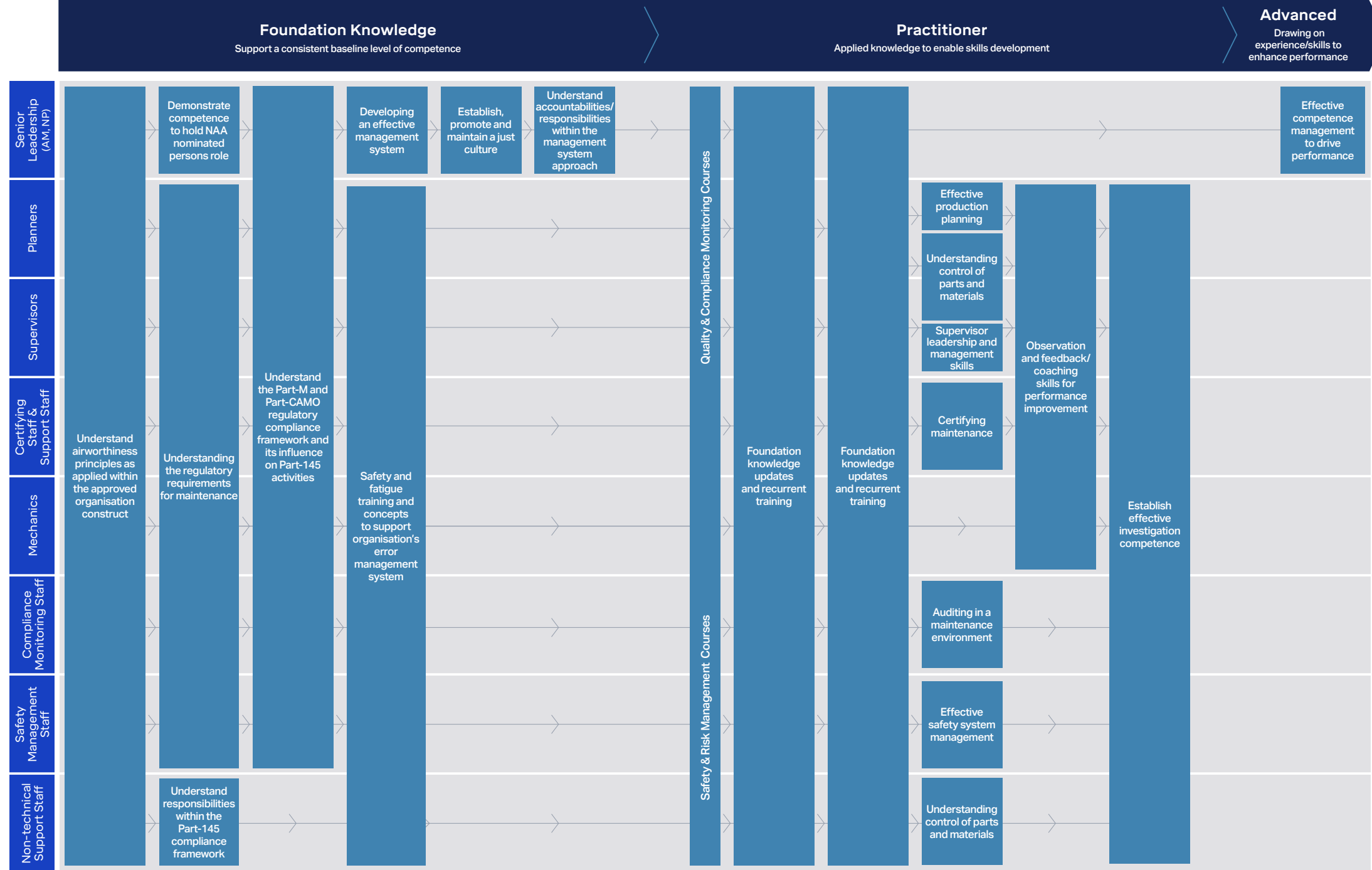


Maintenance (Part-145) Professionals Core Competence Framework

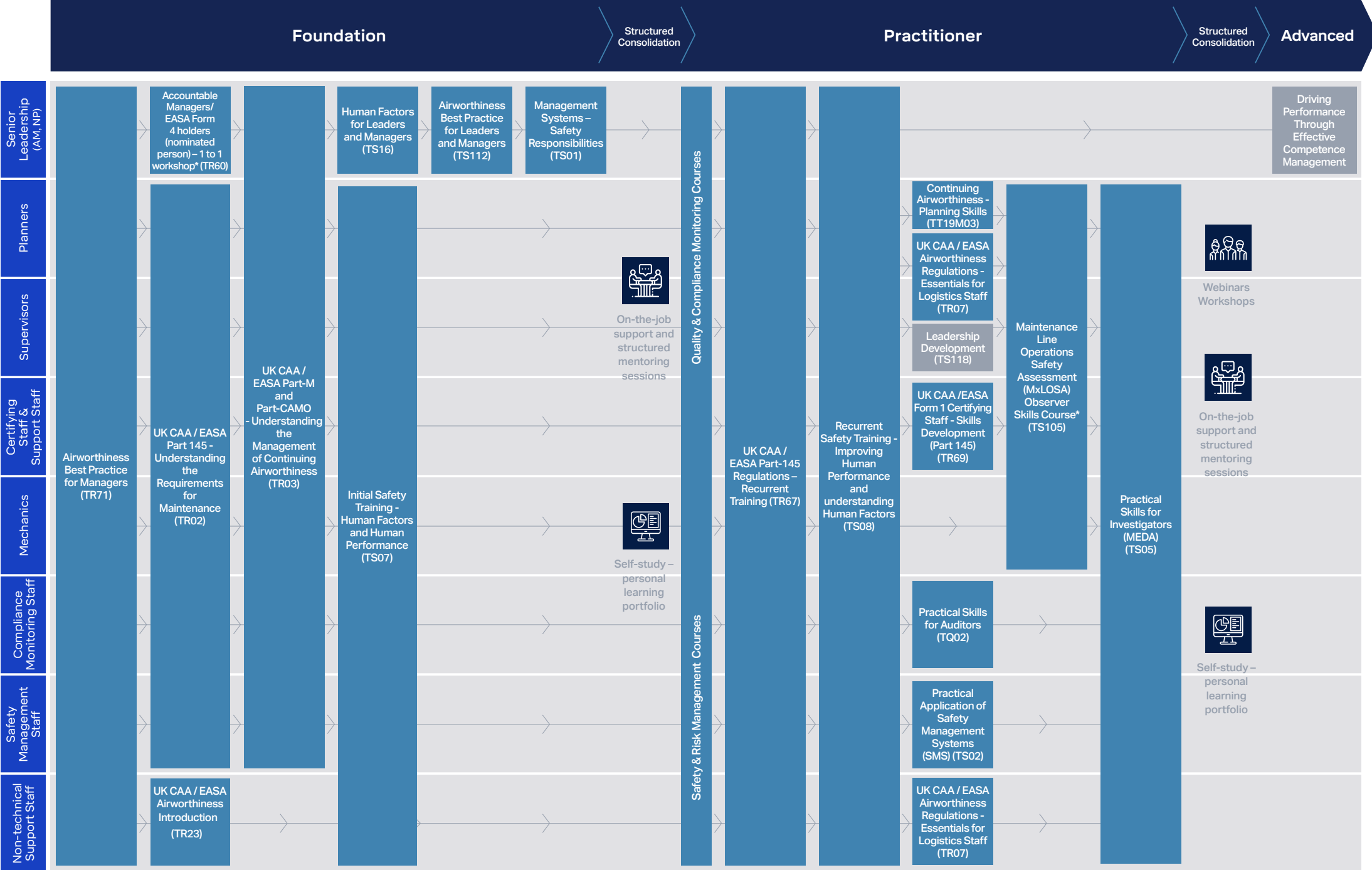
Our Part-145 Competence **Framework** outlines the core knowledge and skills required for professionals who work in a Part-145 organisation. It is designed as a tool for individuals, teams and organisations to evaluate personal and team competence, allowing you to identify and navigate through your training and continuous professional development needs

The Accompanying Part-145 Competence **Pathway** suggests routes that maintenance professionals can follow with Baines Simmons in their learning and development journeys. Use it to explore our offerings and identify the most appropriate course or learning activity for the next stage of your competence development.

Maintenance (Part-145) Professionals Core Competence Framework



Maintenance (Part-145) Professionals Core Competence Pathway



Key: → Suggested pathway Planned course Existing course * In Company Only/Consulting Services

“

The course gave me a better insight into what PART 145 involves and how to make aware of its application at my workplace.

“

Without a doubt it has achieved what it set out to achieve. I am more than happy that I got the most out of the course that I possibly could have.

“

A very detailed course with great information and interactions. Everybody got involved and the debates we had were very interesting.

GET IN TOUCH

Please contact us for further information.

Call: +44 (0)1276 855 412

Email: training@bainessimmons.com

BAINESSIMMONS.COM

BAINES SIMMONS
SAFETY SERVICES